

Lake Cushman Evacuation Levels Guide

Div 9, 10, 12 & 16

This document is intended to be a guide for Lake Cushman residents during an emergency situation. Evacuation Plans will generally use three activation levels. The Incident Commander has responsibility to activate and deactivate this plan through the Mason County Sheriffs' Office. In the event of an emergency, it is important you and your family know what the evacuation level terms mean, and know how to react.

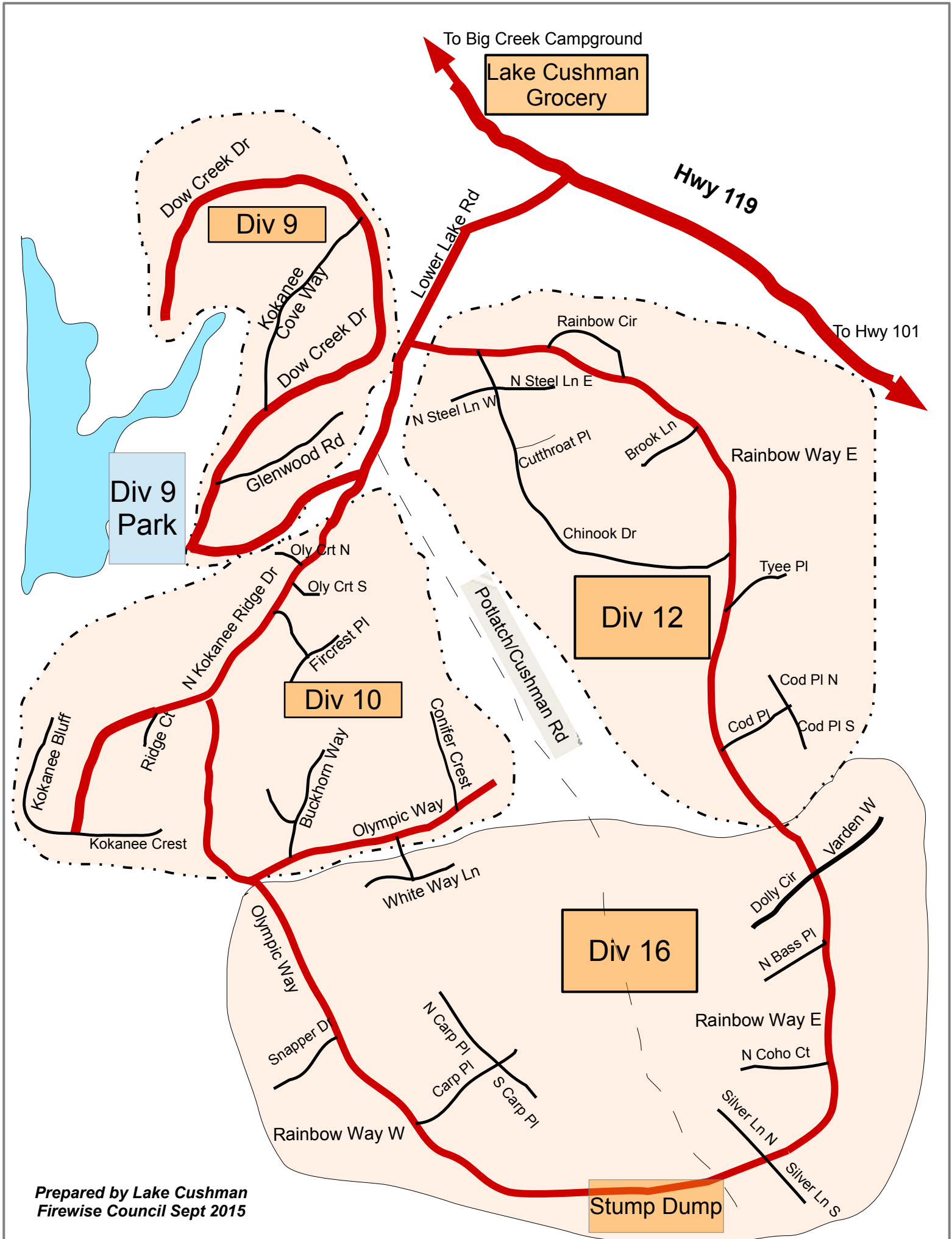
Level 1 (Advisory) - Residents should be aware of the danger that exists in the area, monitor emergency services websites and local media outlets for information. This is the time for preparation and precautionary movement of persons with special needs, mobile property and (under certain circumstances) pets and livestock.

Level 2 (Watch) - This level indicates there is significant danger to your area. Fire & Law Enforcement personnel are working to determine when and if evacuations will be necessary. Be ready to leave at a moments notice.

Level 3 (Warning) Residents are advised to evacuate immediately the risk of fire is imminent. Grave danger may face those who do not depart. This means leave immediately. Listen to local media, and watch for emergency personnel who may be coming by to give further instructions regarding the evacuation.

If directed to a congregation point please see detail map for possible locations. Wait for directions from emergency personnel before proceeding.





**Mileage from Lake Kokanee Park*

North Evac Route

- Exit Park on Lower Lake Rd.
- 1.3 mi. Left on Hwy 119
- N 6.7 mi to Hwy119 & FS24 T
- E 9.0 mi on FS24 to Hwy 101

**Mileage from Lake Kokanee Park*

South Evac Route

- Exit Park on Lower Lake Rd.
- 1.3 mi. Right on Hwy 119
- S 2.5 mi. on Hwy119 to Hwy 101

**Mileage from Lake Kokanee Park*

Alt. South Route

- Exit Park on Lower Lake Rd.
- .4 mi. Keep Left on Lower Lake Rd
- .3 mi. Right on Rainbow Way E.
- 1.3 mi. Left on Potlatch/Cushman Rd
- 2.4 mi. to Hwy 101

Big Creek
Campground

FS24 - Keep Right Stay on Main Rd
(Unpaved)

Div 2

Div 3

Div 4

Div 1

Div 15

Div 13

Div 11

Div 14

Div 19

FD18

Standstill Dr

Div 6

Div 7



**Div 9, 10, 12 & 16
Emergency Evacuation**

Div 5
LCMC Office

Lake Cushman
Grocery

Hoodsport

Hwy 119

Lower
Lake Rd

Rainbow Way E.

Div 12

Div 16

Potlatch/ Cushman Rd

Kokanee
Park

Div 10

Prepared by Lake Cushman Firewise Council
Sept 2015

