



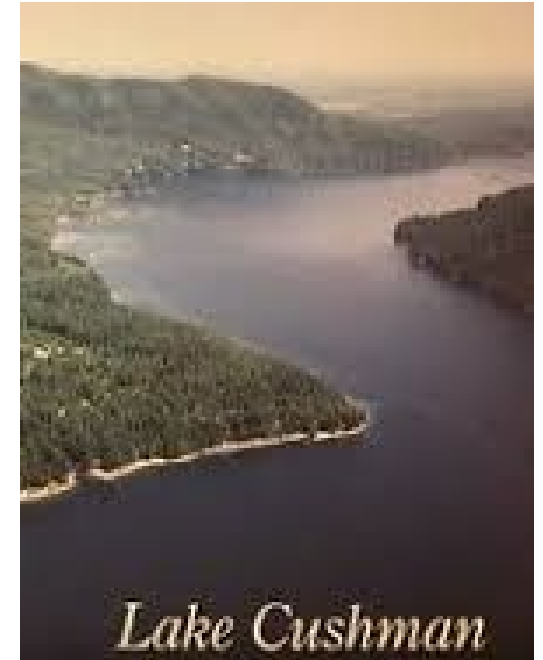
We have provided a list of tips that you should consider before leaving your property for extended periods of time:

1. Do not advertise that you are away! Use caution when leaving any messages on your answering machine or voice mail that indicate that you are away. Do not post your plans, or photos of the trip, on social media (Facebook, Instagram, Twitter, etc.).
2. Advise your Block Watch Representative and neighbors of your future absence.
3. Stop all deliveries. For mail service, have the US Postal Service hold your mail. For newspaper subscriptions, cancel delivery or have a neighbor pick it up. Expecting a package? Have all necessary deliveries made to a neighbor or an alternate address.
4. Use timers on lights and other sound making devices (like a radio or television). Set timers to keep with your regular schedule.
5. Leave shades, blinds, curtains or drapes as usual. If someone is checking your home, have them change the position of the drapes each day.

6. Secure all doors and windows. If you must leave a window open for ventilation, make it a 2nd floor window. Make sure windows are pinned and remove all access to windows, i.e. ladders. Don't forget to activate your alarm system.
7. Make the house look occupied. Park a car in the driveway and have a neighbor or friend move it from time to time. Do not leave notes on the door.
8. Secure all valuables in a safe or remove them from your home. If possible, store valuables at a separate, secure location.
9. Close and lock the garage door and storage sheds. Remove electronic garage door openers from unused vehicles.
10. Make sure anyone you have watching the house has a key, the alarm code and are familiar with the alarm system for emergencies.

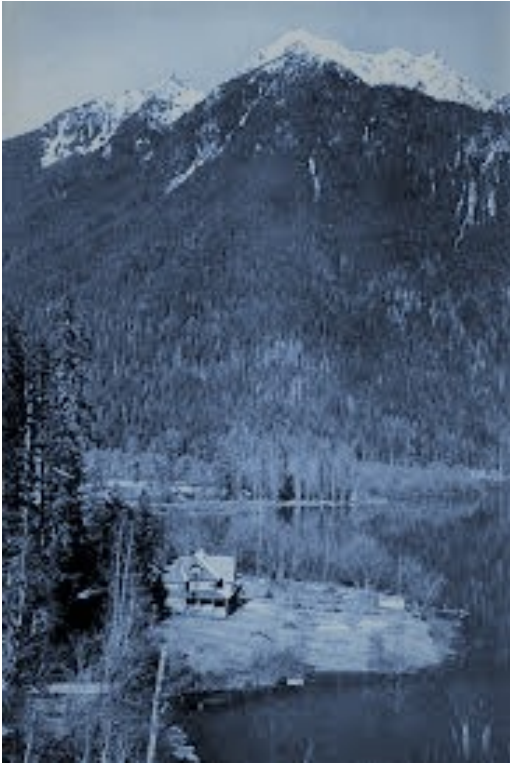
Cabin Watch is a courtesy service provided by Lake Cushman Security. A house/property check DOES NOT preclude you from being a victim of a crime and it does not guarantee the security of your home/property. Lake Cushman Security reserves the right to refuse or cancel/revoke a Cabin Watch without prior notice.

Lake Cushman Security
3740 N Lake Cushman Rd
Hoodsport, WA 98548
(360) 877-5233



Lake Cushman Security

Cabin Watch Program



What is the Cabin Watch program?

This is an additional service that we provide to our Lake Cushman residents/owners. Our Security staff will periodically check on your home/property while you are away and on our Cabin Watch list, to check the security of doors/windows, watch for frozen pipes/leaks/weather related property damage (fallen trees on buildings etc).

To register for this program, you simply need to fill out a Cabin Watch

Form, with a start and ending date for when you will be gone. You can fill out a form by visiting the Lake Cushman Maintenance Company Office (3740 N Lake Cushman Rd, Hoodspport, WA 98548) or by visiting our website (www.LakeCushmanMC.com). This service helps provide peace of mind for those that need to be away from home for an extended or short period of time.

Criteria for Cabin Watch

- Forms must be completely filled out, with all required information, in order to be eligible for placement onto the Cabin Watch List.
- Houses/properties that are placed onto the Cabin Watch List can only be on the list for 6 months before a new form is required to be filled out and submitted. This will renew your place on the list for another 6 months.
- House/property checks are not conducted on homes or properties that are occupied during the owner/renter's absence. If, after you have submitted a Cabin Watch Request Form, you decide to allow someone to stay at your house or on your property during your absence, please contact the LCMC office. Failure to do so will result in your house/property being removed from the Cabin Watch list.
- If your house is not accessible due to a locked gate, fence, aggressive dog, etc., Security will not go over your gate/fence to check your house or property. Security Staff will check your property from a vantage point outside of the gate/fence.
- For safety reasons, Security cannot check doors or windows that are accessed by means of a slippery, unstable or rotting surface.

